



TriClamp® Ferrule, Short | 14WMPS-Size-AL6XN-Finish

| "-7" Finish Part Number | Size (Tube OD) | Length (A) |
|-------------------------|----------------|------------|
| 14WMPS-0.5-AL6XN-7 | 1/2" | 0.500 |
| 14WMPS-0.75-AL6XN-7 | 3/4" | 0.500 |
| 14WMPS-1-AL6XN-7 | 1" | 0.500 |
| 14WMPS-1.5-AL6XN-7 | 1-1/2" | 0.500 |
| 14WMPS-2-AL6XN-7 | 2" | 0.500 |
| 14WMPS-2.5-AL6XN-7 | 2-1/2" | 0.500 |
| 14WMPS-3-AL6XN-7 | 3" | 0.500 |
| 14WMPS-4-AL6XN-7 | 4" | 0.625 |

Dimension "A" meets requirements per ASME BPE table DT-22.



TriClamp Ferrule, Medium | L14AM-Size-AL6XN-Finish

| "-7" Finish Part Number | Size (Tube OD) | Length (A) |
|-------------------------|----------------|------------|
| L14AM-0.5-AL6XN-7 | 1/2" | 1.130 |
| L14AM-0.75-AL6XN-7 | 3/4" | 1.130 |
| L14AM-1-AL6XN-7 | 1" | 1.130 |
| L14AM-1.5-AL6XN-7 | 1-1/2" | 1.130 |
| L14AM-2-AL6XN-7 | 2" | 1.130 |
| L14AM-2.5-AL6XN-7 | 2-1/2" | 1.130 |
| L14AM-3-AL6XN-7 | 3" | 1.130 |
| L14AM-4-AL6XN-7 | 4" | 1.130 |

Dimension "A" meets requirements per ASME BPE table DT-22.



TriClamp Ferrule, Long | B14AM-Size-AL6XN-Finish

| "-7" Finish Part Number | Size (Tube OD) | Length (A) |
|-------------------------|----------------|------------|
| B14AM-0.5-AL6XN-7 | 1/2" | 1.750 |
| B14AM-0.75-AL6XN-7 | 3/4" | 1.750 |
| B14AM-1-AL6XN-7 | 1" | 1.750 |
| B14AM-1.5-AL6XN-7 | 1-1/2" | 1.750 |
| B14AM-2-AL6XN-7 | 2" | 2.250 |
| B14AM-2.5-AL6XN-7 | 2-1/2" | 2.250 |
| B14AM-3-AL6XN-7 | 3" | 2.250 |
| B14AM-4-AL6XN-7 | 4" | 2.250 |

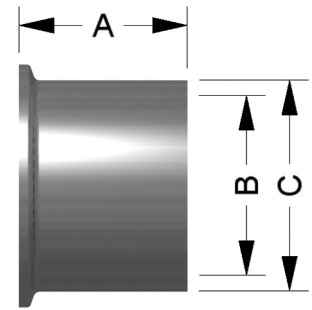
Dimension "A" meets requirements per ASME BPE table DT-22.





TriClamp Ferrule, Heavy Wall | 14MPW-Size-AL6XN-Finish

| "-7" Finish Part Number | Size | Length (A) | (B) | (C) |
|-------------------------|--------|------------|-------|-------|
| 14MPW-1-AL6XN-7 | 1" | 1.625 | 0.870 | 1.160 |
| 14MPW-1.5-AL6XN-7 | 1-1/2" | 1.625 | 1.370 | 1.676 |
| 14MPW-2-AL6XN-7 | 2" | 1.750 | 1.870 | 2.192 |
| 14MPW-2.5-AL6XN-7 | 2-1/2" | 1.750 | 2.370 | 2.708 |
| 14MPW-3-AL6XN-7 | 3" | 1.813 | 2.870 | 3.224 |
| 14MPW-4-AL6XN-7 | 4" | 2.125 | 3.834 | 4.256 |



TriClamp Ferrule, Extra Heavy Wall | 14MPWH-Size-AL6XN

| Machined Finish Part Number | Size | Length (A) | (B) | (C) |
|-----------------------------|--------|------------|-------|-------|
| 14MPWH-051750-AL6XN | 1/2" | 1.75 | 0.370 | 0.984 |
| 14MPWH-102500-AL6XN | 1" | 2.50 | 0.870 | 1.984 |
| 14MPWH-104000-AL6XN | 1" | 4.00 | 0.870 | 1.984 |
| 14MPWH-152500-AL6XN | 1-1/2" | 2.50 | 1.370 | 1.984 |
| 14MPWH-153000-AL6XN | 1-1/2" | 3.00 | 1.370 | 1.984 |
| 14MPWH-153250-AL6XN | 1-1/2" | 3.25 | 1.370 | 1.984 |
| 14MPWH-154000-AL6XN | 1-1/2" | 4.50 | 1.370 | 1.984 |
| 14MPWH-202500-AL6XN | 2" | 2.50 | 1.870 | 2.516 |
| 14MPWH-203000-AL6XN | 2" | 3.00 | 1.870 | 2.516 |
| 14MPWH-203250-AL6XN | 2" | 3.25 | 1.870 | 2.516 |
| 14MPWH-302000-AL6XN | 3" | 2.00 | 2.870 | 3.579 |
| 14MPWH-303000-AL6XN | 3" | 3.00 | 2.870 | 3.579 |
| 14MPWH-303750-AL6XN | 3" | 3.75 | 2.870 | 3.579 |
| 14MPWH-304000-AL6XN | 3" | 4.00 | 2.870 | 3.579 |
| 14MPWH-306000-AL6XN | 3" | 6.00 | 2.870 | 3.579 |
| 14MPWH-402500-AL6XN | 4" | 2.50 | 3.834 | 4.682 |
| 14MPWH-403000-AL6XN | 4" | 3.00 | 3.834 | 4.682 |
| 14MPWH-403500-AL6XN | 4" | 3.50 | 3.834 | 4.682 |
| 14MPWH-404000-AL6XN | 4" | 4.00 | 3.834 | 4.682 |

