



SANITARY BUTT-WELD PIPE ADAPTERS

www.csidesigns.com • www.csidesigns.com • www.csidesigns.com



800.654.5635

- Tube O.D. Butt-Weld to Nominal Pipe Butt-Weld
- Tapered for Smooth Flow
- Squared Ends for Single Pass Fusion Welding in Schedule 5 and Schedule 10
- Standard Pipe Bevel on Schedule 40
- Schedule 10 in Stock
- Schedule 5 and Schedule 40 Available Upon Request
- MTR's Available Upon Request
- Available in 316L Stainless Steel, AL-6XN[®] Alloy, and Hastelloy[®] C-22[®]

AL-6XN is a registered trademark of ATI Properties, Inc. Licensed to Allegheny Ludlum Corporation

Hastelloy and C-22 are registered trademarks of Haynes International

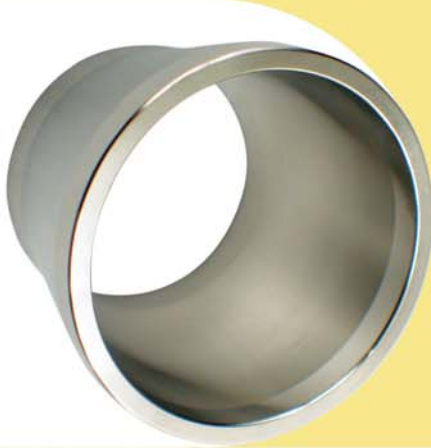
www.csidesigns.com • 800.654.5635





CENTRAL STATES INDUSTRIAL

Sanitary Butt-Weld Pipe Adapters



TUBE O.D. BUTT-WELD ADAPTERS FOR "SCHEDULE" PIPE SIZES

REF. DWG FIGURE	A	C	L	TUBE END - "A"	PIPE END - "C" (schedule 10)		
	TUBE O.D. SIZE	NOMINAL PIPE SIZE	OVERALL LENGTH	WALL THICKNESS	NOMINAL PIPE O.D.	WALL THICKNESS	CSI PART # FOR 316L
1	1/2	1/2	1 3/4	0.065	0.840	0.083	SW3105PX05T
1	3/4	1/2	1 3/4	0.065	0.840	0.083	SW3105PX75T
1	3/4	3/4	1 3/4	0.065	1.050	0.083	SW3175PX75T
2	1	1	1 1/2	0.065	1.315	0.109	SW3110PX10T
2	1 1/2	1 1/2	1 1/2	0.065	1.900	0.109	SW3115PX15T
2	2	2	1 1/2	0.065	2.375	0.109	SW3120PX20T
3	2 1/2	2 1/2	2 1/2	0.065	2.875	0.120	SW3125PX25T
3	3	3	2 1/2	0.065	3.500	0.120	SW3130PX30T
3	4	4	2 1/2	0.083	4.500	0.120	SW3140PX40T

Note: Available in schedule 5 and schedule 40. All dimensions are in inches.

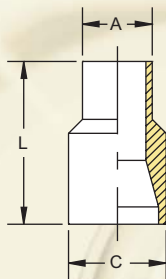


FIGURE 1

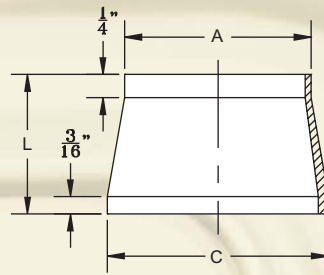


FIGURE 2

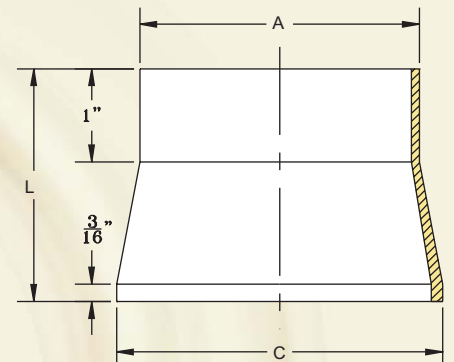


FIGURE 3



STATE OF THE ART
CENTRAL STATES INDUSTRIAL
 SANITARY BUTT-WELD PIPE ADAPTERS



SANITARY CLAMP PIPE ADAPTERS

www.csidesigns.com • www.csidesigns.com • www.csidesigns.com



- Tube O.D. Sanitary Clamp Size to Nominal Pipe Butt-Weld
 - Tapered for Smooth Flow
- Squared Ends for Single Pass Fusion Welding in Schedule 5 and Schedule 10
 - Available in Schedule 5 and Schedule 40 Pipe
- MTR's Available Upon Request
 - Available in 316L Stainless Steel, AL-6XN® Alloy, and Hastelloy® C-22®
 - Standard Pipe Bevel on Schedule 40

800.654.5635

AL-6XN is a registered trademark of ATI Properties, Inc. Licensed to Allegheny Ludlum Corporation

Hastelloy and C-22 are registered trademarks of Haynes International

www.csidesigns.com • 800.654.5635



CENTRAL STATES INDUSTRIAL

Sanitary Clamp Pipe Adapters

TUBE O.D. CLAMP ADAPTERS FOR "SCHEDULE" PIPE SIZES

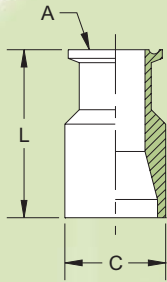


FIGURE 1

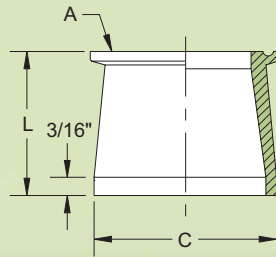


FIGURE 2

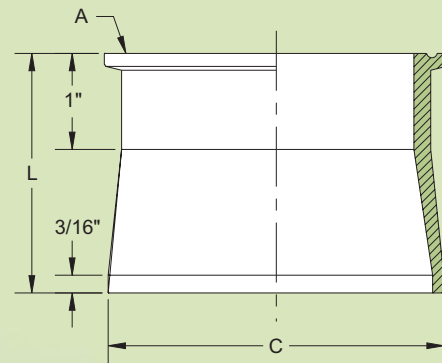


FIGURE 3

REF. DWG FIGURE	A	C	L	PIPE END - "C" (schedule 10)		
	SANITARY CLAMP SIZE	NOMINAL PIPE SIZE	OVERALL LENGTH	NOMINAL PIPE O.D.	WALL THICKNESS	CSI PART # FOR 316L
1	1/2	1/2	1 3/4	0.840	0.083	14MPW05P
1	3/4	1/2	1 3/4	0.840	0.083	14MPW75X05P
1	3/4	3/4	1 3/4	1.050	0.083	14MPW75P
2	1	1	1 1/2	1.315	0.109	14MPW10P
2	1 1/2	1 1/2	1 1/2	1.900	0.109	14MPW15P
2	2	2	1 1/2	2.375	0.109	14MPW20P
3	2 1/2	2 1/2	2 1/2	2.875	0.120	14MPW25P
3	3	3	2 1/2	3.500	0.120	14MPW30P
3	4	4	2 1/2	4.500	0.120	14MPW40P
N/A	6	6	CALL	6.625	0.134	14MPW60P

Note: All dimensions are in inches.



STATE OF THE ART
CENTRAL STATES INDUSTRIAL
SANITARY CLAMP PIPE ADAPTERS

